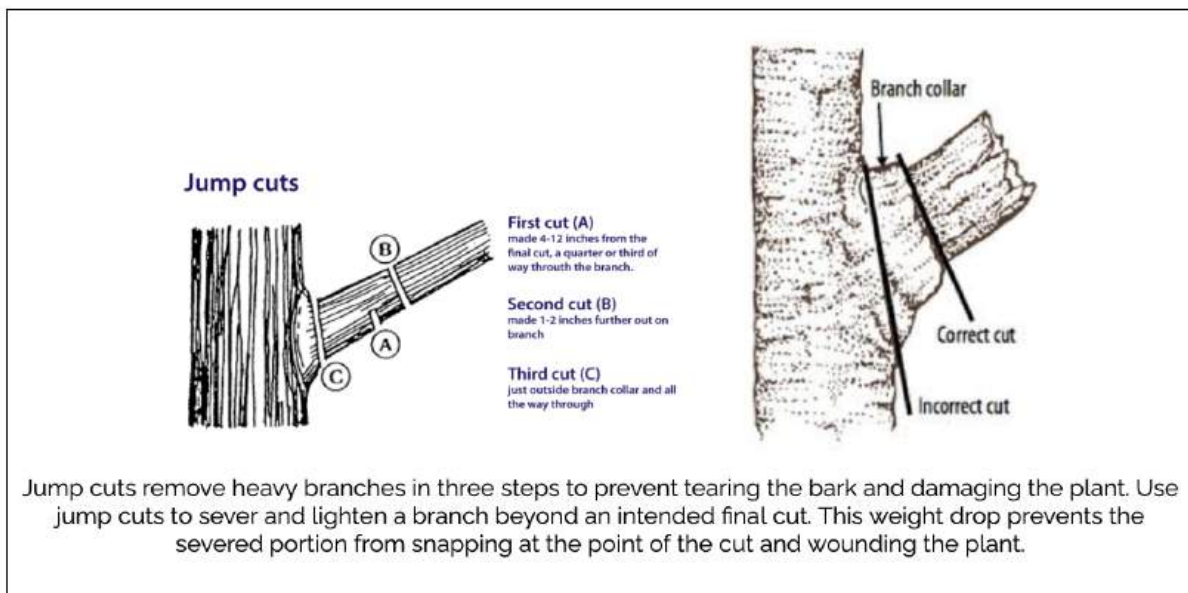


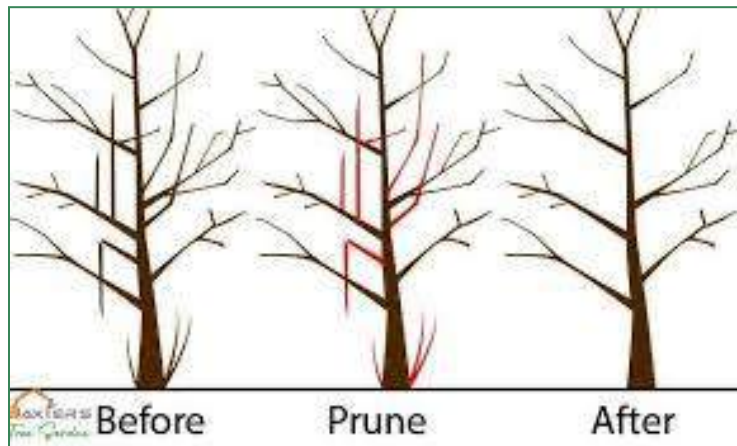


Tree Pruning Care

When pruning your trees, remember to remove all dead wood, broken branches, root sprouts, and suckers which will help restore tree vigor. This can now be done on all trees except oak trees. Make all cutbacks to a branch bark ridge, leaving a branch collar but no stubs as shown on the diagram below.



Additionally, knowing when to prune is key to maintaining healthy trees. For oak trees, major pruning can be done from the 3rd week of July through the end of February, effectively preventing the spread of oak wilt disease, which can kill trees. If the hustle and bustle of summer fun keeps you from being able to prune your trees, no need to worry; all other trees can be pruned during their dormant season, from November through February. This knowledge will give you the confidence to care for your trees effectively.



PRUNING PRO-TIPS

- For larger, more established trees, it may be worth hiring a tree pruning company. Although it could be costly upfront, it could spare your trees from permanent wind damage. The more mature trees need to have their canopies lifted and maintained so they can better withstand wind and storms.
- Avoid using pruning paint on the wound, as it can slow down the healing process.
- All-purpose pruners are essential tools for pruning. *Felco F-2 One-Hand Pruning Shears* and *Fiskars 15-inch Loppers* can be found on Amazon or at any local home and garden store.



PHOTO: AMAZON



PHOTO: AMAZON

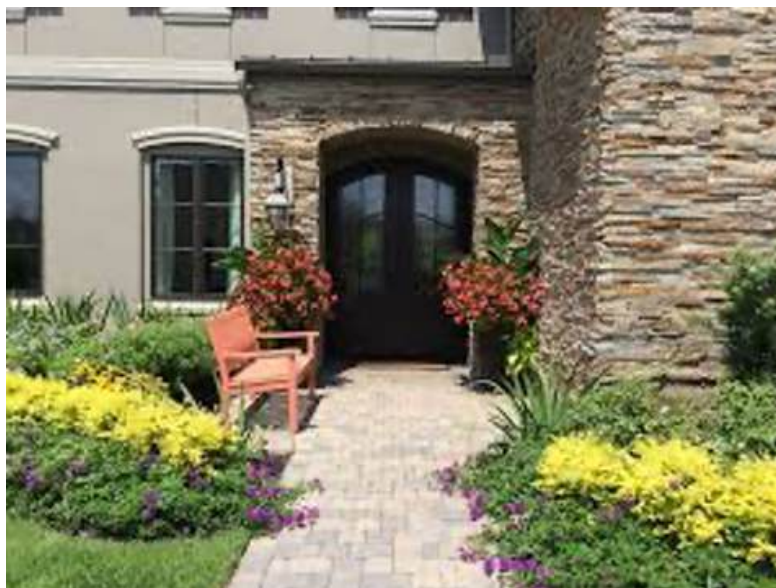
ACCENT PLANT FOCUS: SUNSHINE LIGUSTRUM WILL BRIGHTEN YOUR LANDSCAPE!

Sunshine Ligustrum, with its bright yellow foliage, is a low-maintenance shrub that can grow to a height and width of 3 ½ feet. It's an excellent choice for those with busy schedules or less gardening experience. The fact that it does not flower or spread seeds is a plus for allergy sufferers and also means less work for you. It can tolerate cold weather down to -10 degrees F, so you can rest assured that freeze damage should be minimal. It remains evergreen and is drought-tolerant, not a heavy water user, further reducing the need for constant care.

This versatile plant is not just a beautiful addition to your garden, but also a creative tool for your landscaping. It can be used as a short hedge for privacy, an accent plant, or even in a container, allowing you to experiment with different arrangements. The year-round golden foliage is a visual treat, drawing your eye to its location. It thrives in full sun, adding a bright focal spot to your garden. If your yard has water-retaining soils such as heavy

clay, plant it 2 inches higher than the soil line and add mulch to the top of the root ball.

Everyone who has planted these Sunshine Ligustrum loves them. Plant one, two, or three in your landscape and enjoy their beauty.





HOMEOWNER SERVICES

- Social Media Videos
 - Facebook
 - Instagram
 - TikTok
 - YouTube

Scan here for more information



July 2025 Issue of *Gardening by the Moon*